

# SÉRIE 17.000

## MICROINTERRUPTORES DE TECLAS E ALAVANCAS DE POLIAMIDA

### ESPECIFICAÇÕES:

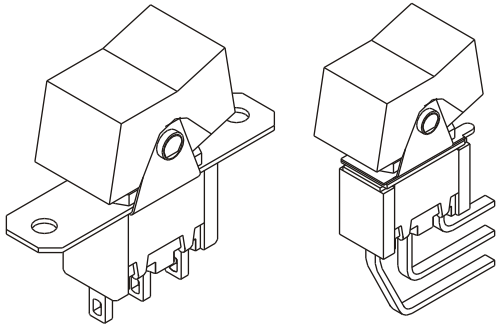
**CARACTERÍSTICAS ELÉTRICAS:** 5A com carga resistiva em 120 VCA ou 2A com carga resistiva em 250 VCA. (Contato Q)

**RESISTÊNCIA DE CONTATO:** máximo de 10 miliohms com aplicação de 1A em VCC.

**RESISTÊNCIA DE ISOLAMENTO:** mínimo de 1.000 megaohms.

**RIGIDEZ DIELÉTRICA:** 1000 V (rms) para 1 minuto (mínimo).

**TEMPERATURA DE OPERAÇÃO:** 0°C a 55°C.



### REFERÊNCIAS

#### Unipolares

Referência				( ) Momentâneo
17.101	LIGA	-	LIGA	
17.103	LIGA	DESL	LIGA	
17.105	(LIGA)	DESL	(LIGA)	
17.107	LIGA	DESL	(LIGA)	
17.108	LIGA	-	(LIGA)	
Terminais	2 - 3	-	2 - 1	

#### Bipolares

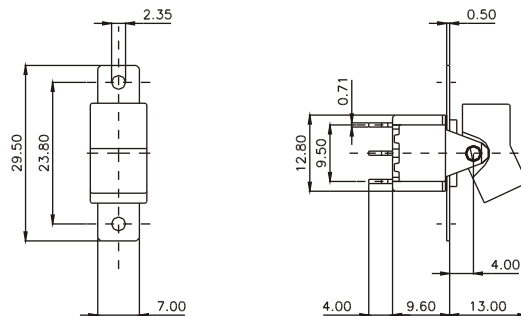
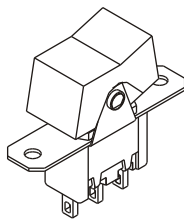
Referência				( ) Momentâneo
17.201	LIGA	-	LIGA	
17.203	LIGA	DESL	LIGA	
17.205	(LIGA)	DESL	(LIGA)	
17.207	LIGA	DESL	(LIGA)	
17.208	LIGA	-	(LIGA)	
Terminais	2 - 3	-	2 - 1	
	5 - 6	-	5 - 4	
17.211	LIGA	LIGA	LIGA	
17.213	LIGA	LIGA	(LIGA)	
17.215	(LIGA)	LIGA	(LIGA)	
Terminais	2 - 3	2 - 3	2 - 1	
	5 - 6	5 - 4	5 - 4	

#### Tripolares

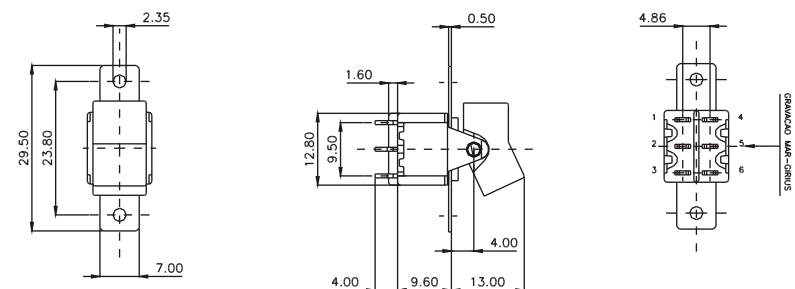
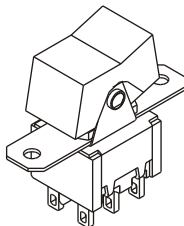
Referência				( ) Momentâneo
17.301	LIGA	-	LIGA	
17.303	LIGA	DESL	LIGA	
17.305	(LIGA)	DESL	(LIGA)	
17.307	LIGA	DESL	(LIGA)	
17.308	LIGA	-	(LIGA)	
Terminais	2 - 3	-	2 - 1	
	5 - 6	-	5 - 4	
	8 - 9	-	8 - 7	

### TECLA COM FIXAÇÃO - T2C#

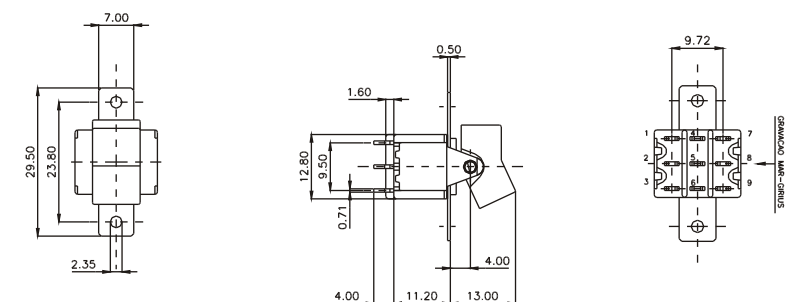
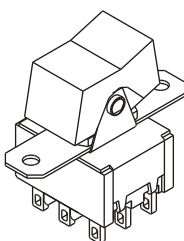
#### UNIPOLAR



#### BIPOLAR



#### TRIPOLAR

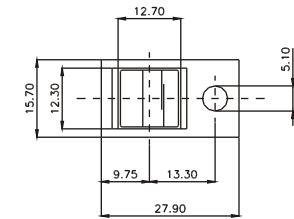
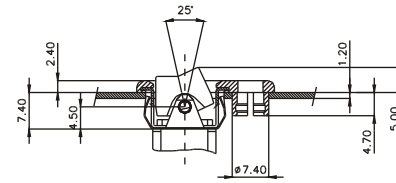
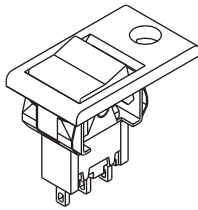


# SÉRIE 17.000

## MICROINTERRUPTORES COM MOLDURA

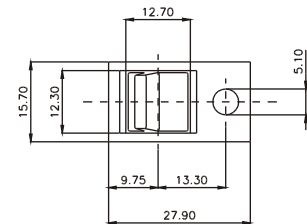
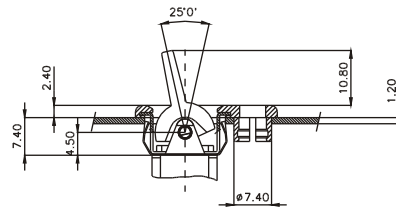
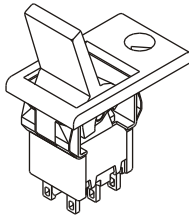
L#T1#

UNIPOLAR  
BIPOLAR



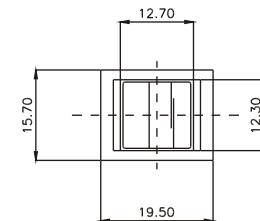
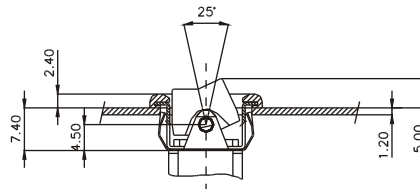
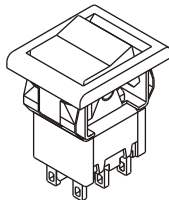
L#A5#

UNIPOLAR  
BIPOLAR



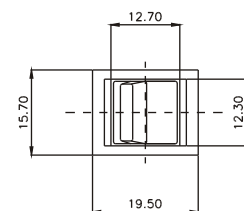
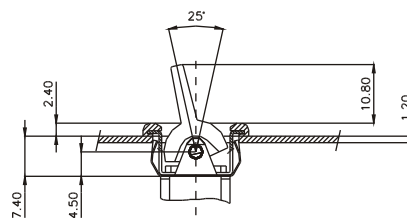
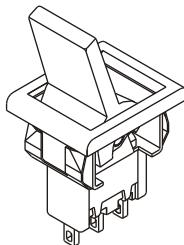
M#T1#

UNIPOLAR  
BIPOLAR



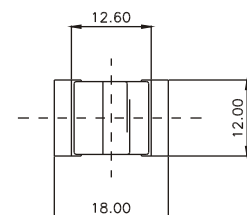
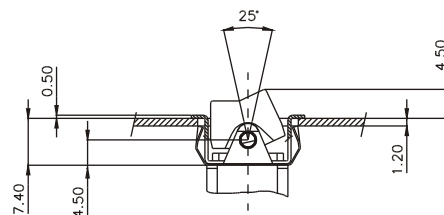
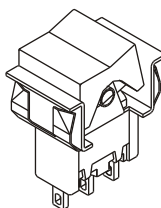
M#A5#

UNIPOLAR  
BIPOLAR



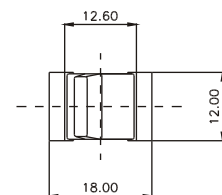
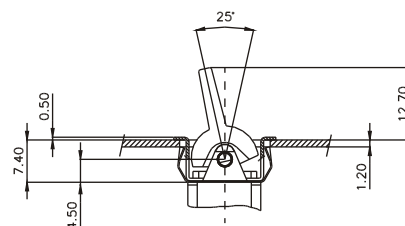
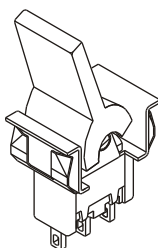
PT1#

UNIPOLAR  
BIPOLAR



PA5#

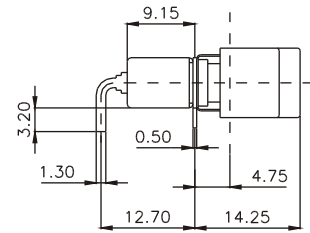
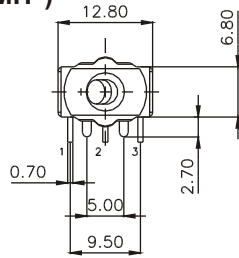
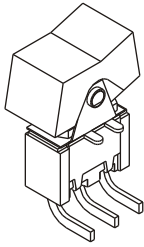
UNIPOLAR  
BIPOLAR



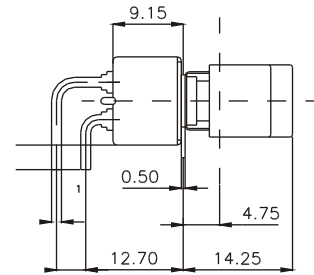
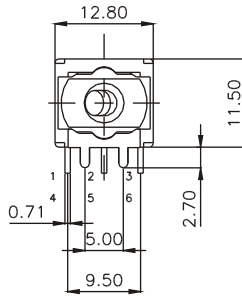
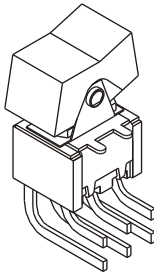
# SÉRIE 17.000

## TECLA DE POLIAMIDA PARA CIRCUITO IMPRESSO MONTAGEM HORIZONTAL (TERMINAIS "MH")

### UNIPOLAR

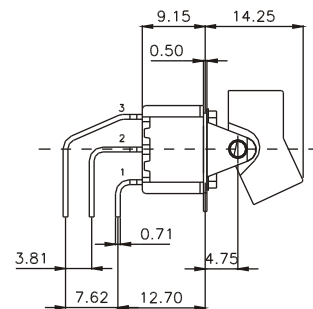
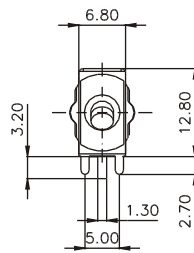
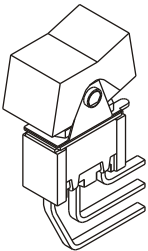


### BIPOLARES

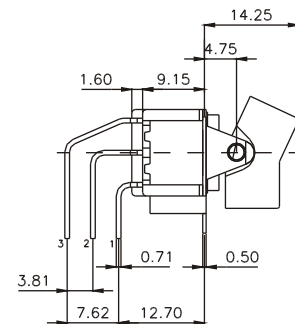
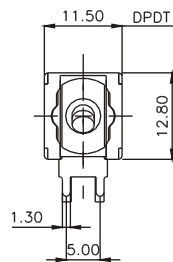
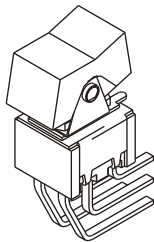


## TECLA DE POLIAMIDA PARA CIRCUITO IMPRESSO MONTAGEM VERTICAL (TERMINAIS "MV")

### UNIPOLAR



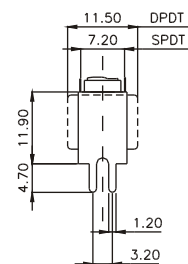
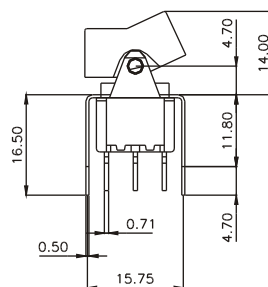
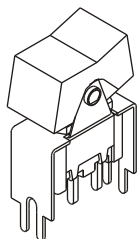
### BIPOLAR



## TECLA DE POLIAMIDA PARA CIRCUITO IMPRESSO MONTAGEM TOPO (TERMINAIS "MT")

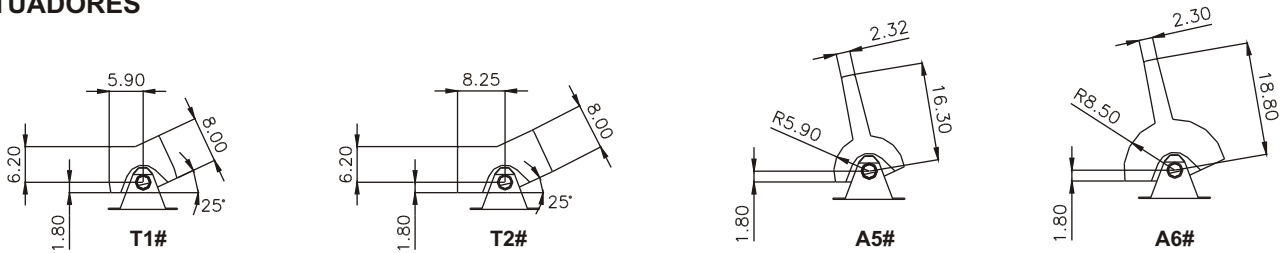
### UNIPOLAR

### BIPOLAR

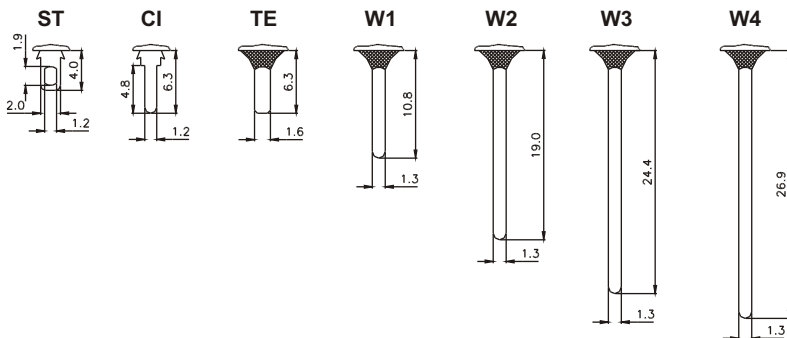


# SÉRIE 17.000

## ATUADORES



## TERMINAIS



**OBS.:** Estes terminais não estão disponíveis para os microinterruptores em Montagem Horizontal, Vertical e Topo, já que seus terminais são especificados como **MH**, **MV** e **MT** respectivamente, conforme Barra de Codificação.

Todos os terminais recebem normalmente o selo de epoxi.

## CONTATOS

**S** - Cobre com banho de prata (standard)  
3A com carga resistiva - 120 VCA.  
1A com carga resistiva - 250 VCA.

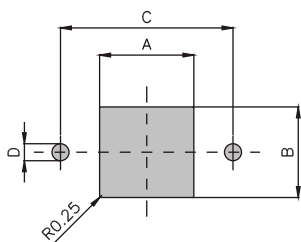
**Q** - Liga de prata / níquel  
5A com carga resistiva - 120 VCA.  
2A com carga resistiva - 250 VCA.

**B** - Cobre com banho de ouro, sobre banho de níquel.  
0,4 Volts-Amps (VA) máx. - 20V máx. (CA/CC).

**G** - Liga de prata / níquel com banho de ouro.  
5A com carga resistiva - 120 VCA.  
2A com carga resistiva - 250 VCA.  
0,4 Volts-Amps (VA) máx - 20V máx (CA/CC).

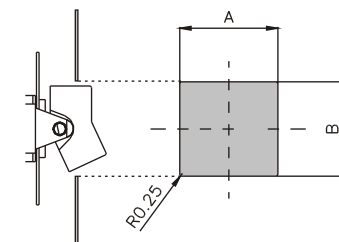
## FURAÇÕES

### FURAÇÃO DO PAINEL PARA FIXAÇÃO



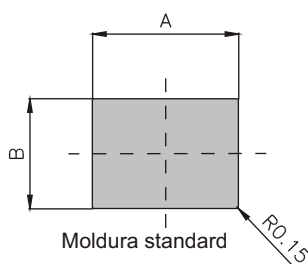
TIPO	A	B	C	D
T1	13.0	12.5	23.8	2.4
T2	18.0	10.5	23.8	2.4
A5	13.0	12.5	23.8	2.4
A6	18.0	10.5	23.8	2.4

### FURAÇÃO DO PAINEL PARA TECLAS DE POLIAMIDA

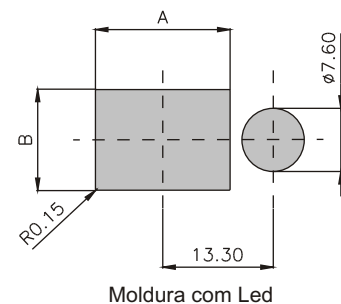


TIPO	A	B
T1	13.0	12.5
T2	18.0	10.5
A5	13.0	12.5
A6	18.0	10.5

### FURAÇÃO DO PAINEL PARA MOLDURAS



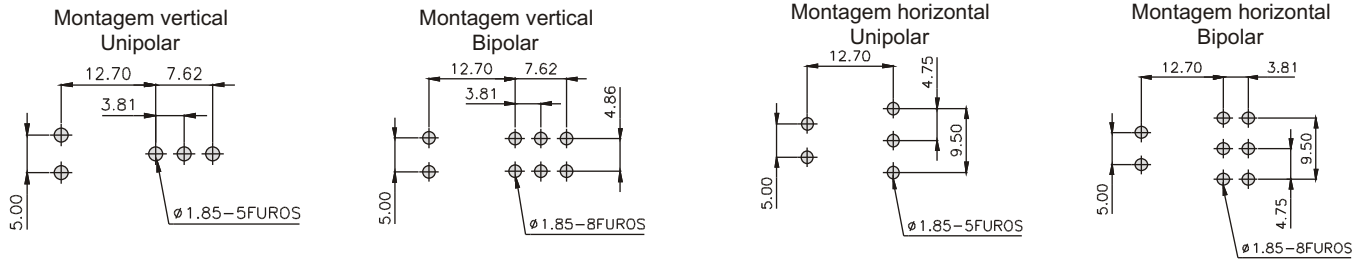
ESPESS. DO PAINEL	A	B
3.18	16.2	12.2
1.9	15.8	12.2
1.20	15.4	12.2



Moldura com Led

# SÉRIE 17.000

## GUIA DE FURAÇÃO PARA CIRCUITO IMPRESSO



### # - CORES

Obs.: Substituir # pelo código da cor desejada.

A - azul	E - vermelho
B - branco	F - preto - (standard)
C - amarelo	G - cinza
D - verde	H - marrom

Obs.: A não substituição do # pelo código de cor nos itens mencionados, implicará na opção F (preto standard).

### SELO



Obs.: Todo interruptor recebe selo, conseqüentemente acrescentar a letra E no final da codificação.

## BARRAS DE CODIFICAÇÃO

### Tecla com fixação

□□□□□	□□	□□	□	E
Referência	atuador	terminal	contato	selo
	T2C#	ST	S	
	T1C	CI	B	
	A5C	TE	Q	
	A6C	W1	G	
		W2		
		W3		
		W4		

### Moldura

□□□□□	□□	□□	□□	□	E
Referência	moldura	atuador	terminal	contato	selo
	L#	T1#	ST	S	
	M#	A5#	CI	B	
	P		TE	Q	
			W1	G	
			W2		
			W3		
			W4		

## Teclas com montagem horizontal, vertical e topo

□□□□□	□□	□□	□	E
Referência	atuador	terminal	contato	selo
	T1#	MH	S	
	T2#	MV	B	
	A5#	MT	Q	
	A6#		G	

## CIRCUITOS 17211 / 17213 / 17215

