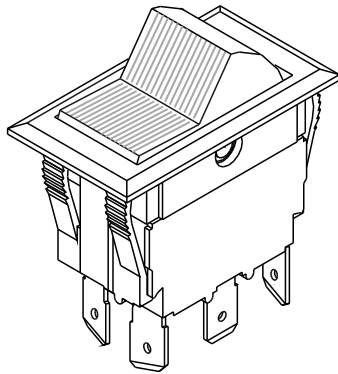


SÉRIE 14.000

INTERRUPTORES DE TECLA



ESPECIFICAÇÕES:

CARACTERÍSTICAS ELÉTRICAS: 15A com carga resistiva em 120 VCA ou 10A com carga resistiva em 250 VCA. (Contato Q)

RESISTÊNCIA DE CONTATO: máximo de 20 miliohms com aplicação de 1A em VCC.

RESISTÊNCIA DE ISOLAMENTO: mínimo de 1.000 megohms.

RIGIDEZ DIELÉTRICA: 1000 V (rms) para 1 minuto (mínimo).

TEMPERATURA DE OPERAÇÃO: 0°C a 55°C.



REFERÊNCIAS

Unipolares

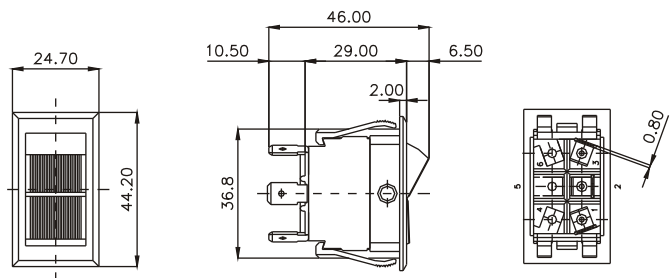
Referência			
14.101	LIGA	-	LIGA
14.103	LIGA	DESL	LIGA
14.105	(LIGA)	DESL	(LIGA)
14.107	LIGA	DESL	(LIGA)
14.108	LIGA	-	(LIGA)
* 14.123	LIGA	-	DESL
14.127	(LIGA)	-	DESL

() Momentâneo

* Possíveis opções com lâmpadas 120/250 VCA

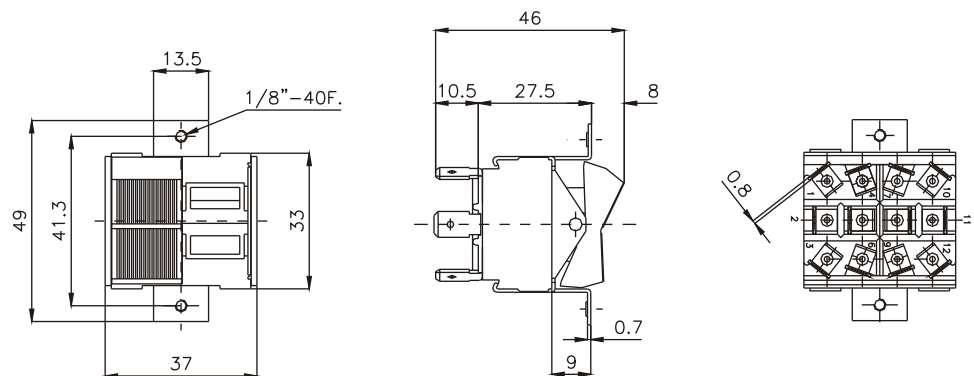
Bipolares

Referência			
14.201	LIGA	-	LIGA
14.203	LIGA	DESL	LIGA
14.205	(LIGA)	DESL	(LIGA)
14.207	LIGA	DESL	(LIGA)
14.208	LIGA	-	(LIGA)
14.211	LIGA	LIGA	LIGA
14.213	LIGA	LIGA	(LIGA)
14.215	(LIGA)	LIGA	(LIGA)
14.223	LIGA	-	DESL
14.227	(LIGA)	-	DESL



Quadripolares

Referência			
14.401	LIGA	-	LIGA
14.403	LIGA	DESL	LIGA
14.405	(LIGA)	DESL	(LIGA)
14.407	LIGA	DESL	(LIGA)
14.408	LIGA	-	(LIGA)
14.411	LIGA	LIGA	LIGA
14.413	LIGA	LIGA	(LIGA)
14.415	(LIGA)	LIGA	(LIGA)
14.423	LIGA	-	DESL
14.427	(LIGA)	-	DESL

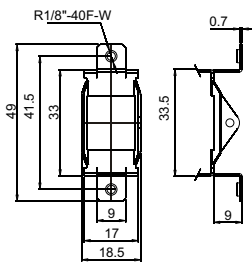


SUPORTE

S1C - rasgo 3,5 mm.

S1R - rosca R.1/8"-40F-W

S1F - furo Ø 4,0 mm.

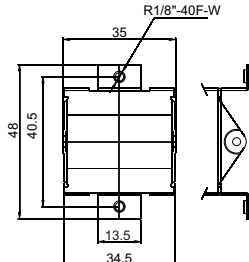


S1R

S2C - rasgo 3,5 mm.

S2R - rosca R.1/8"-40F-W

S2F - furo Ø 4,0 mm.

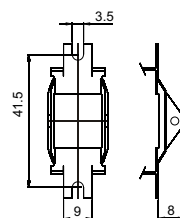


S2R

S3C - rasgo 3,5 mm.

S3R - rosca R.1/8"-40F-W

S3F - furo Ø 3,5 mm.

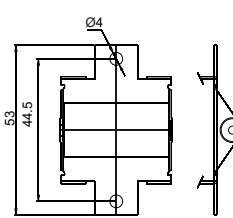


S3C

S4C - rasgo 3,5 mm.

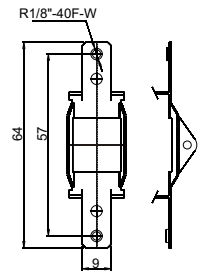
S4R - rosca R.1/8"-40F-W

S4F - furo Ø 4,0 mm.



S4F

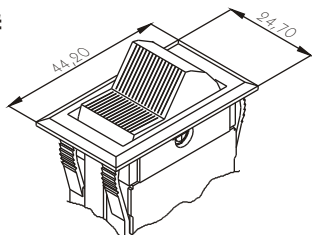
S5R - rosca R.1/8"-40F-W



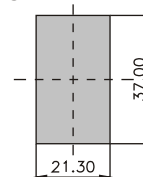
S5R

SÉRIE 14.000

MOLDURA - M#

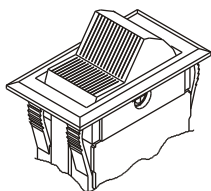


RASGO PARA ENCAIXE

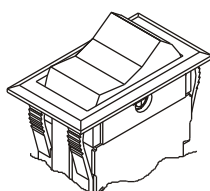


ATUADORES DE POLIAMIDA

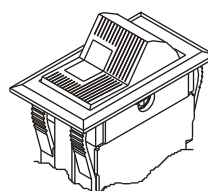
T1#



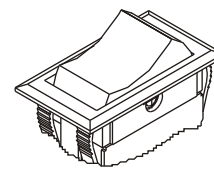
T2#



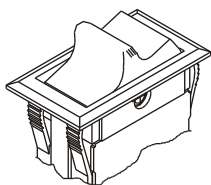
T3##



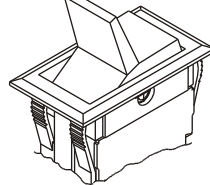
R1#



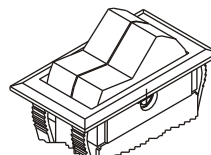
T5#



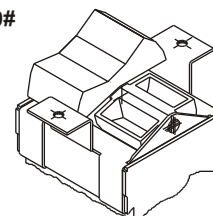
T6#



T7##

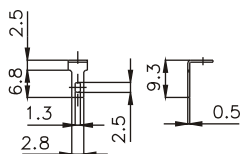


T20#

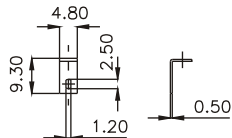


TERMINAIS

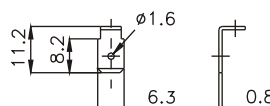
E1 - Engate rápido
2,8 x 0,5 (standard)



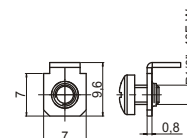
E2 - Engate rápido
4,8 x 0,5



E3 - Faston 6,3 x 0,8



P1 - Parafuso



CONTATOS

Q
15A com carga resistiva em 120VCA
10A com carga resistiva em 250VCA

G
20A com carga resistiva em 120VCA
15A com carga resistiva em 250VCA

- CORES

Obs.: Substituir # pelo código da cor desejada.

- A - azul
- B - branco
- C - amarelo
- D - verde
- E - vermelho
- F - preto - (standard)
- G - cinza
- H - marrom

OBSERVAÇÕES:

T 3 - Tecla com visor luminoso - codificar a cor da tecla e do visor. Ex.: **T3FE** - tecla preta com visor vermelho.

T 7 - Tecla dupla - codificar a cor das duas teclas. Ex.: **T7BA** - uma tecla branca e uma tecla azul.

BARRA DE CODIFICAÇÃO

Suportes

Referência	suporte	atuador	terminal	contato
S1	C	T1#	E1	Q
S3	R	T2#	E2	G
S5	F	T3##	E3	
S2	C	T10#	P1	
S4	R	T20#		
	F			

Molduras

Referência	moldura M#	atuador	terminal	contato
		T1#	E1	Q
		T2#	E2	G
		T3##	E3	
		R1#	P1	
		T5#		
		T6#		
		T7##		