

## Conector placa-cabo 2,50mm / 2.50mm wire to board connector

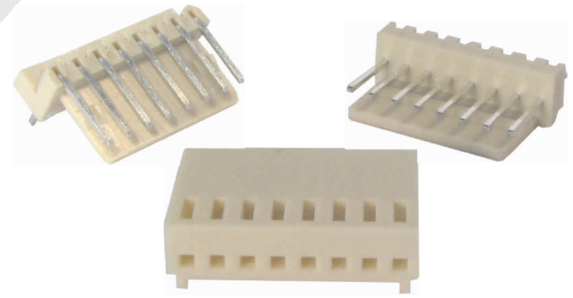
Chave de código / How to order

### PC1

PC (MN) 1 - (15)

Número de contatos / Number of contacts  
02 a/to 15

MN - Montagem em PCI / PCB assembly - 90°  
MC - Montagem em PCI / PCB assembly - 180°  
F - Alojamento / Housing



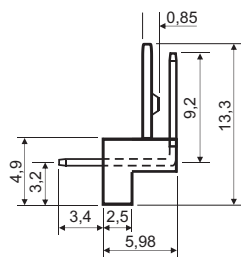
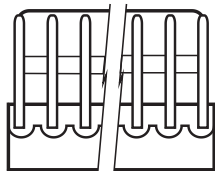
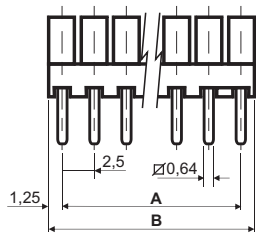
O código do terminal utilizado no alojamento PCF1 é o PCT2.  
The p/n of the terminal used with PCF1 housing is PCT2.

## Especificações / Specifications

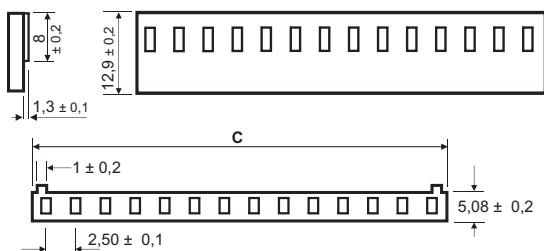
Corrente máxima / Current rating	3 A
Tensão máxima / Voltage rating	250 VCA / VCC (VAC / VDC)
Resistência de contato inicial / Initial contact resistance	20 m
Resistência de isolamento mín. / Minimum insulation resistance	1000 M (500VCC / VDC)
Rigidez dielétrica / Withstanding voltage	1500 VCA/VAC (1 minuto / minute)
Temperatura de operação / Operate temperature range	-40°C a (to) + 105°C
Material dielétrico / Insulator material	PA 66 UL94V-2
Material dos contatos / Contact material	Latão estanhado / Brass tin plated
Cabo aplicável / Applicable cable	22 a / to 30 AWG

## Dimensões e diagramas / Dimensions and layouts

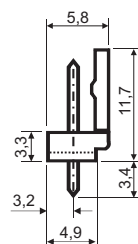
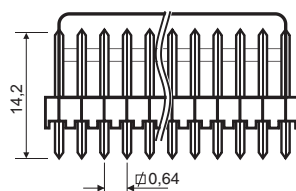
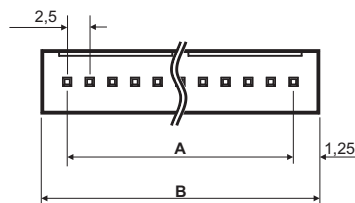
PCMN1



PCF1



PCMC1



PCT2

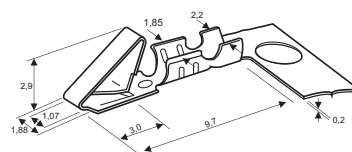
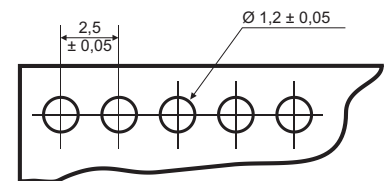


Diagrama PCI / Printed circuit layout



Vista de baixo / Bottom view

**A** = 2,5 x nº de contatos - 2,5  
2,5 x number of contacts - 2,5

**B** = 2,5 x nº de contatos  
2,5 x number of contacts

**C** = 2,54 x nº de contatos + 0,7  
2,54 x number of contacts + 0,7