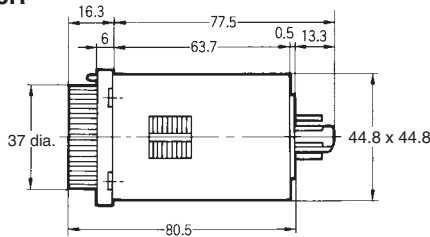
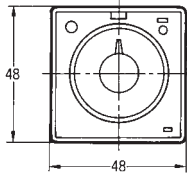
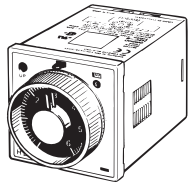


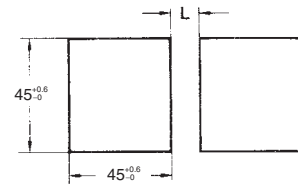
Dimensions

Note: All units are in millimeters unless otherwise indicated.

H2C/H2C-S/H2C-R/H2C-R-S/H2C-8/H2C-8R

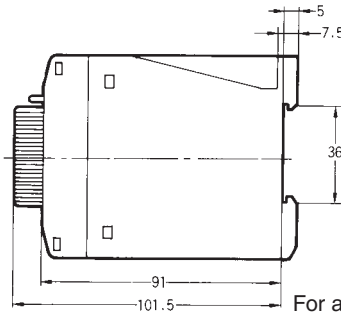
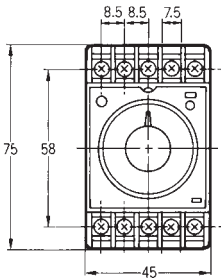
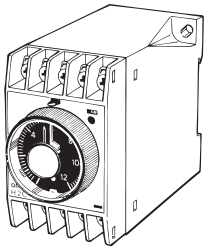


For Flush Mounting

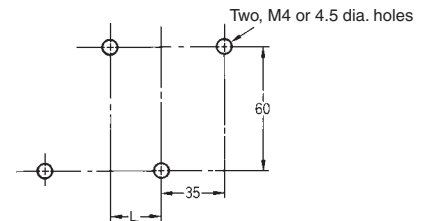


For a load current of 3 A max., dimension L becomes 3 mm min. with an interval of 0 mm between timers.
 For a load current of 6 A max., dimension L becomes 8 mm min. with an interval of 5 mm between timers.
 When using in locations with high ambient temperatures, ensure that there is an interval of at least 5 mm between timers.

H2C-F/H2C-FR

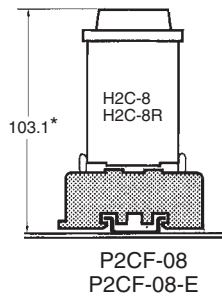
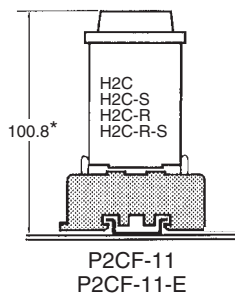


Mounting Holes

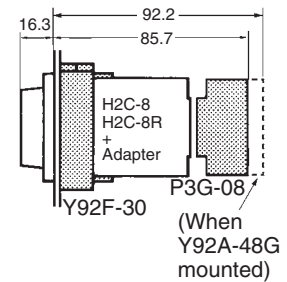
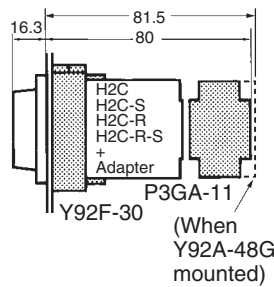


For a load current of 1 A max., dimension L becomes 10 mm min. with an interval of 0 mm between timers.
 For a load current of 3 A max., dimension L becomes 15 mm min. with an interval of 5 mm between timers.
 For a load current of 6 A max., dimension L becomes 20 mm min. with an interval of 10 mm between timers.

Dimensions with Front Connecting Socket P2CF-08-□/ P2CF-11-□



Dimensions with Back Connecting Socket P3G-08/P3GA-11

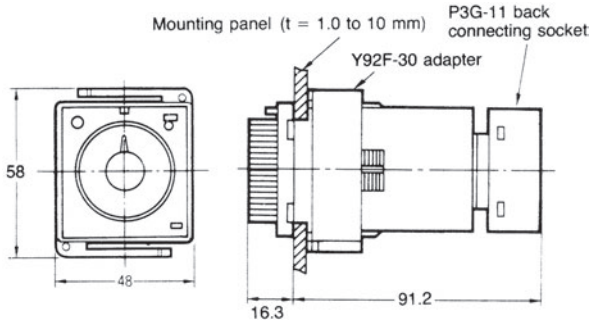


*These dimensions vary with the kind of DIN track (reference value).

■ Accessories (Order Separately)

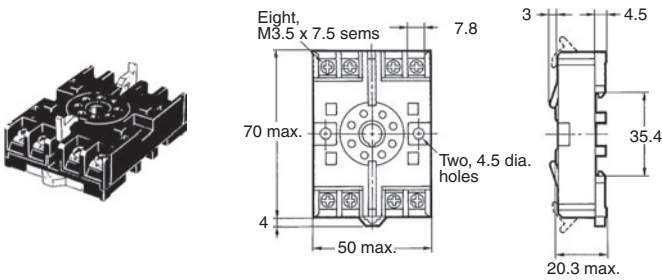
Adapter for Flush Mounting

Y92F-30

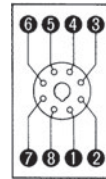


Track Mounting/Front Connecting Socket

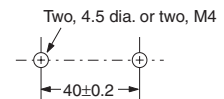
P2CF-08



Terminal Arrangement/
Internal Connections
(Top View)



Surface Mounting Holes



**P2CF-08-E (Finger Safe Terminal Type)
Conforming to VDE0106/P100**

