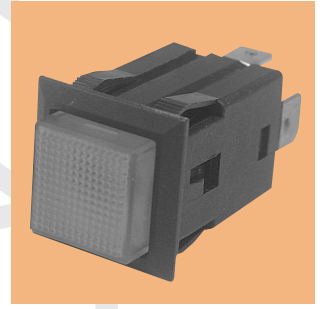
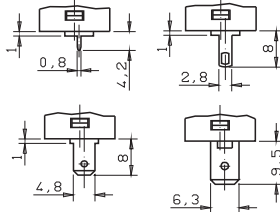
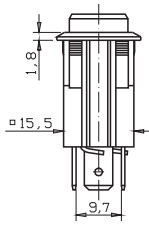
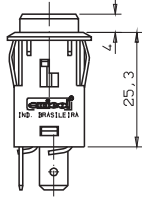
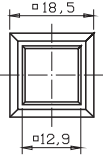


IPU Series

IPU 03 and 04 Models - Single-Pole push button switch 1A 220 Vac

Illuminated square actuator - neon, LED or incandescent

TIPOS DE TERMINAIS



Catalog numbering sequence

IPU
Series

03
Model

3
Electrical function

2
Types of terminals

0
Plating

1
Current*

06
Body color

03
Actuator color

- 03...neon
- 04...LED
- X5...incandescent illuminated 12V / 24V

- 1...ON - OFF
- 3...OFF - (ON)

- 1...Printed circuit - copper**
- 2...Soldering 2.8mm - copper**
- 3...Faston 4.8mm - copper
- 5...Faston 6.3mm - brass
- 6...Faston 6.3mm - copper

0...without plating (standard)
contact us for other types of plating

1...1A

06...black (standard)
contact us for other colors

- 00...crystal
- 02...red
- 03...green (under consulting)
- 04...amber (under consulting)
- contact us for other colors

* 220VCA - Resistive load
**available only tin plated