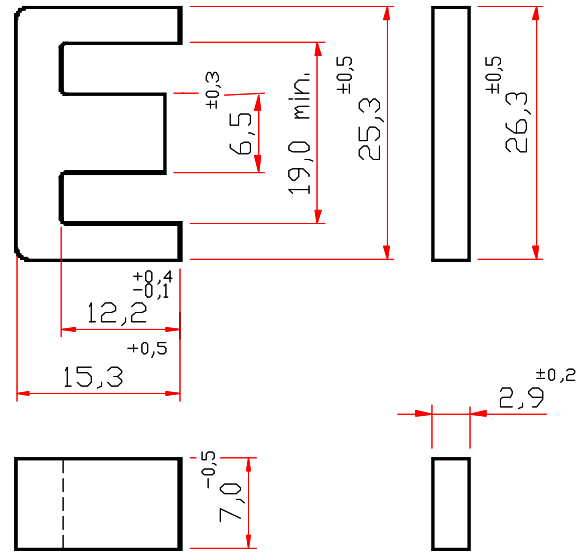


NEI-25/18/7

Parâmetros Efetivos do Núcleo:

$\Sigma l/A$	1,15	mm ⁻¹
Le	47,0	mm
Ae	41,0	mm ²
Amin	---	mm ²
Ve	1927,0	mm ³

Peso Aprox. (pç) 10,0 g



Dimensões em mm

COM GAP

Itens com gap mediante consulta

SEM GAP

DESCRIÇÃO DE ENCOMENDA	MATERIAL	Al [nH]	Tol.%	~g [mm]	~ µe
NEI-25/18/7-1500-IP6	IP6	1500	+30 / -20	---	1372
NEI-25/18/7-1500-IP12R	IP12R	1500	+30 / -20	---	1372