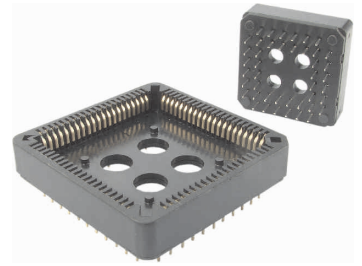


PLCC

Chave de código / How to order

PLCC **28**

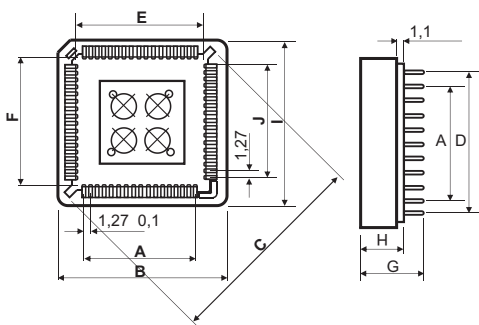
Número de vias / Number of contacts
20, 28, 32, 44, 52, 68, 84



Especificações / Specifications

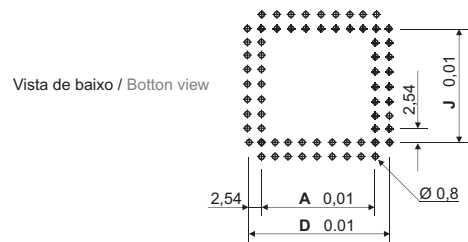
Corrente máxima / Current rating	1 A
Tensão máxima / Voltage rating	50 VCA / VCC (VAC / VDC)
Resistência de contato inicial máx. / Max. initial contact resistance	20 m
Resistência de isolamento / Insulation resistance	500 M
Rigidez dielétrica / Withstanding voltage	500 VCA / VAC (1 minuto / minute)
Temperatura de operação / Operate temperature range	-25°C a (to) + 125°C
Material do isolador / Insulator material	PBT UL94V-0
Material dos contatos / Contact material	Bronze fosforoso dourado / Phosphor bronze, gold finish
Material dos terminais / Leads material	Bronze fosforoso estanhado / Phosphor bronze, tin finish

Dimensões e diagramas / Dimensions and layouts



Todas as dimensões em milímetros / All dimensions in millimeters

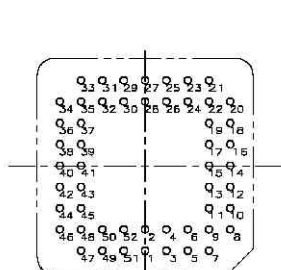
Diagrama PCI / Printed circuit layout



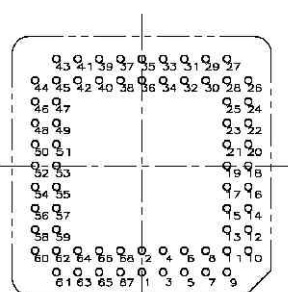
Número de vias Number of ways	Dimensões / Dimensions: mm									
	A	B	C	D	E	F	G	H	I	J
20	5,08	15,50	16,70	10,16	9,30	9,30	11,30	7,60	15,50	5,08
28	7,62	18,00	20,38	12,70	11,90	11,90	11,30	7,60	18,20	7,62
32	7,62	18,00	22,34	12,70	11,90	14,40	11,30	7,60	23,15	10,16
44	12,70	23,15	27,60	17,78	16,76	16,76	11,30	7,60	23,58	12,70
52	15,24	25,90	31,40	20,32	19,12	19,12	11,30	7,60	25,90	15,24
68	20,32	31,80	39,60	25,40	24,25	24,25	11,30	7,60	31,80	20,32
84	25,40	36,70	47,20	30,48	29,28	29,28	11,30	7,60	36,70	25,40

Diagrama de pinos dos soquetes PLCC / PLCC sockets PCB hole patterns

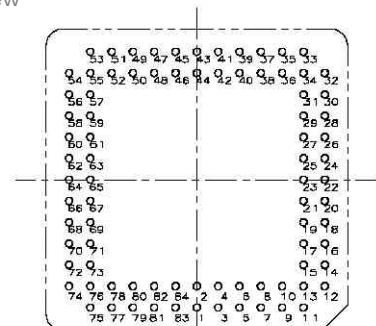
Vista do lado dos componentes / Component side view



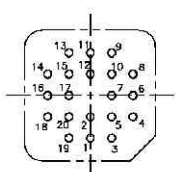
52 vias / ways



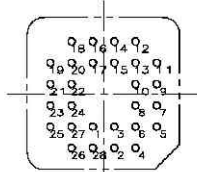
68 vias / ways



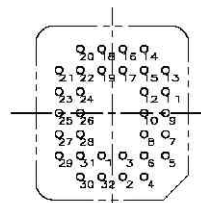
84 vias / ways



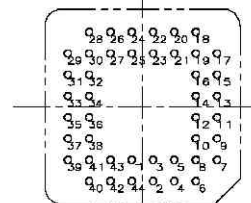
20 vias / ways



28 vias / ways



32 vias / ways



44 vias / ways