

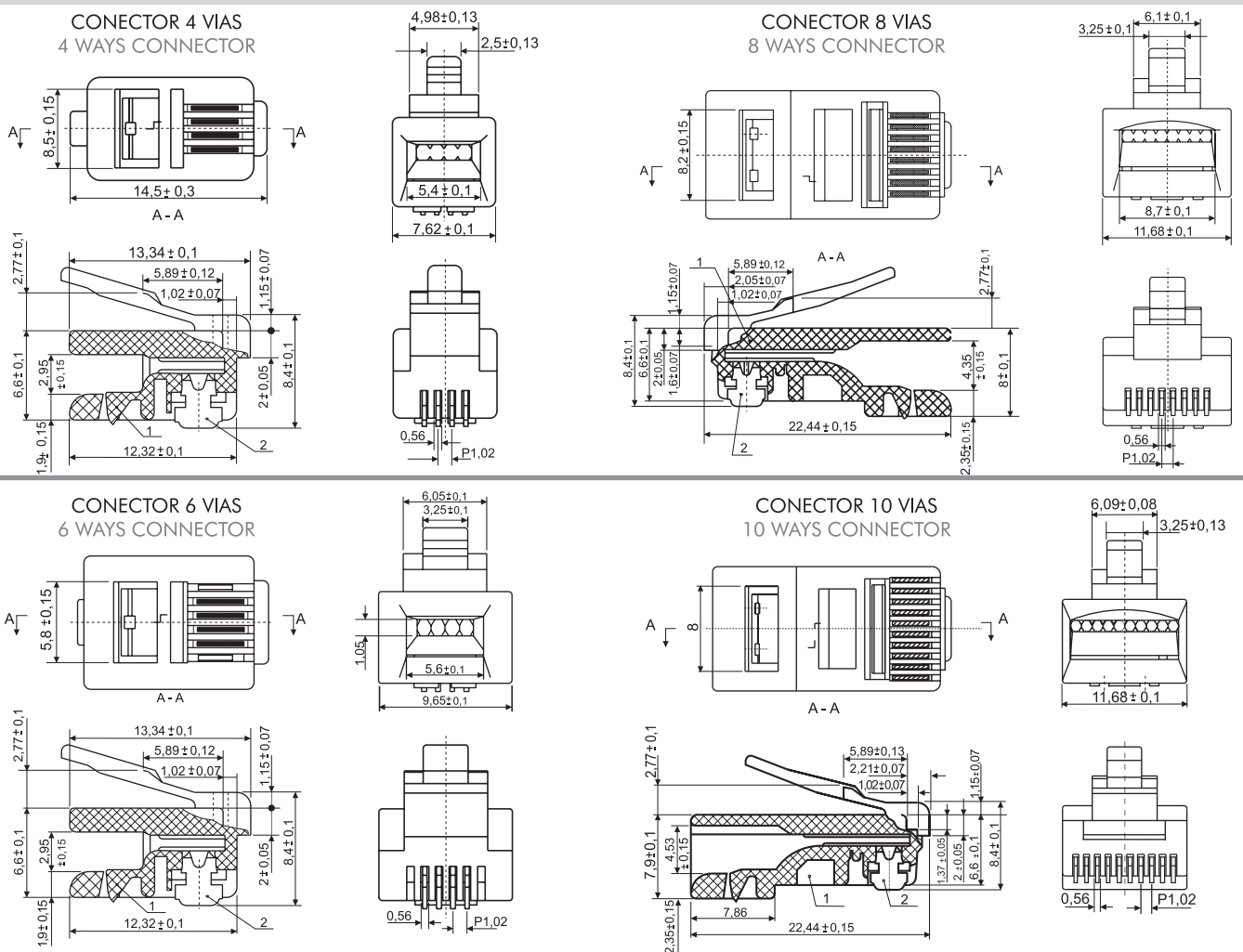
Código / Code	Vias / Ways	Contatos / Contacts
TM 44	4P	4C
TM 64	6P	4C
TM 66	6P	6C
TM 88	8P	8C
TM1010	10P	10C



Especificações / Specifications

Corrente máxima / Current rating	1,5 A
Tensão máxima / Voltage rating	125 VCA / VCC (VAC / VDC)
Resistência de contato inicial máx. / Maximum initial contact resistance	≤ 20 mΩ
Resistência de isolamento mín. / Minimum insulation resistance	10 MΩ
Rigidez dielétrica / Withstanding voltage	500 VCA / VAC (1 minuto / minute)
Temperatura de Operação / Operate temperature range	-25 ~ 55°C
Material do isolador / Insulator material	PC transparente / PC clear UL94V-2
Material dos contatos / Contact material	Bronze fosforoso com 6μ Au / Phosphor bronze with 6μ Au finish
Material da blindagem / Shielding material (para for TM88-BL)	Latão / Brass H65Y T=0.2mm
Cabo aplicável: Conductor flexível multifilar / Recommended cable: Stranded wire	26~24 AWG

Dimensões / Dimensions

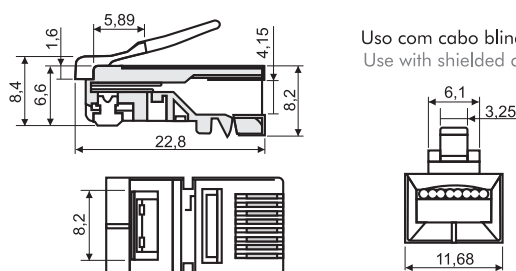
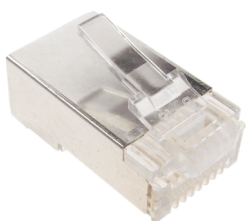


Todas as dimensões em milímetros / All dimensions in millimeters

Tolerância / Tolerance : ± 0.20 mm

TM88-BL

CONECTOR BLINDADO 8 VIAS / 8 WAYS SHIELDED CONNECTOR



Usado com cabo blindado
Use with shielded cable

ACESSÓRIOS: Capas de PVC p/ TM88 e TM88-BL
ACCESSORIES: PVC covers for TM88 and TM88-BL caps



Código / Code	Cor / Color	Código / Code	Cor / Color
TC-VM	Vermelho / Red	TC-AM	Amarelo / Yellow
TC-BR	Branco / White	TC-VD	Verde / Green
TC-PR	Preto / Black	TC-CZ	Cinza / Gray
TC-AZ	Azul / Blue		