

Specification for LED Product - 5AV4UC15

(1).Absolute Maximum Rating

(Ta=25°C)

Item	Symbol	Absolute Maximum Rating	Unit
Forward Current	IF	20	mA
Peak Forward Current	IFP	160	mA
Reverse Voltage	VR	5	V
Power Dissipation	PD	150	mw
Electrostatic Discharge	ESD	1000	V
Operating Temperature	TOP	-40~80°C	°C
Storage Temperature	TSTG	-40~100°C	°C
Lead Soldering Temperature	TSOL	260°C FOR 5 SECONDS	

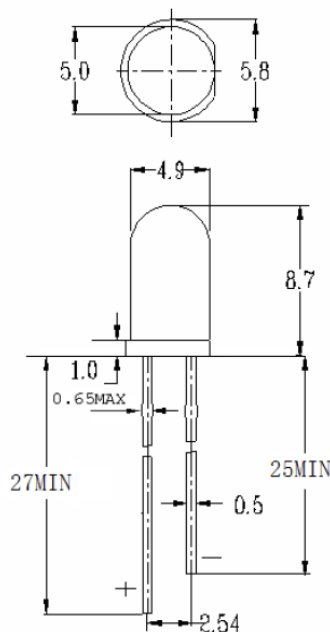
IFP Conditions: pulse Width ≤ 10msec and duty ≤ 1/10

(2).Initial Electrical/Optical Characteristics

(Ta=25°C)

Item	Symbol	Condition	Min	Typ	Max	Unit
Forward Voltage	VF	IF=20mA	2.8	3.1	3.4	V
Reverse Current	IR	VR=5V	/	/	10	uA
Viewing Angle	2θ1/2	IF=20mA	/	30		deg
Luminous Flux	Po	IF=20mA	3000		5000	mcd
Color Temperature	Tc	IF=20mA		10000		K
Recommend Forward Current	IF(Rec)	/	/	20	/	mA

OUTLINE DIMENSIONS AND MATERIALS



Part Number	Chip		Lens Color
	Material	Emitting Color	
5AP4UC15	InGaN	PINK	Water Clear

NOTES:

- 1) All dimensions are millimeters.
- 2) Tolerance is ± 0.25mm unless otherwise noted.