

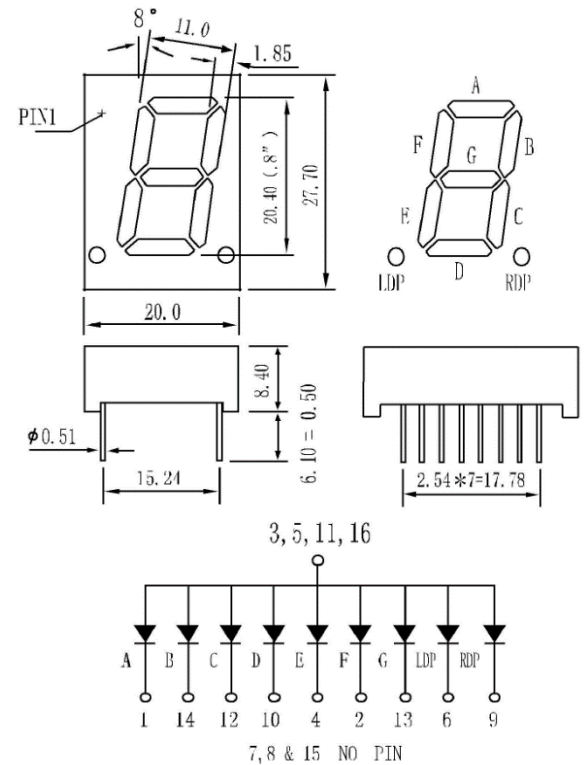
## Specification for LED Product – SM420802N

### ■ ABSOLUTE MAXIMUM RATINGS AT T<sub>a</sub>=25°C:

PARAMETER	SYMBOL	RED	UNIT
Power Dissipation Per Segment	PAD	50	mw
Reverse Voltage Per Segment	VR	5	V
Continuous Forward Current Per Segment	IAF	20	mA
Peak Forward Current Per Segment(Duty-0.1,1KHz)	IPF	60	mA
Operating Temperature Range	TOPr	-20℃ to 80℃	
Storage Temperature Range	Tstg	-30℃ to 85℃	
Lead Soldering Temperature 260℃ at 1.6mm From Body for 3 second			

### ■ ELECTRICAL/OPTICAL CHARACTERISTICS AT T<sub>a</sub>=25°C:

PARAMETER	SYMBOL	TEST CONDITION	Color	MIN	TYP	MAX	UNIT
Forward Voltage ,Per Segment	V <sub>F</sub>	I <sub>F</sub> =20mA	RED	1.9	2	2.5	V
Reverse Current , Per Segment	I <sub>R</sub>	V <sub>R</sub> =5V	RED			50	μA
Peak Emission Wavelength	λ <sub>p</sub>	I <sub>F</sub> =20mA	RED	630	633	637	nm
Luminous Intensity Per Segment	I <sub>V</sub>	I <sub>F</sub> =20mA	RED	23	25	28	mcd



NOTES : 1. All dimensions are in millimeters. (inches)  
 2. Tolerance is  $\pm 0.25(0.010)$  unless otherwise specified.

### ■ FEATURES:

- High intensity and reliability
- High quality, Low power requirement and low cost
- IC compatible , Easy assembly
- Meet RoHS EU Directive
- ESD 2000V (HMB)

### ■ DESCRIPTION:

- 0.8 Inch Single Digits Display
- Common Anode
- Black face, white segment
- Luminous Color: RED