
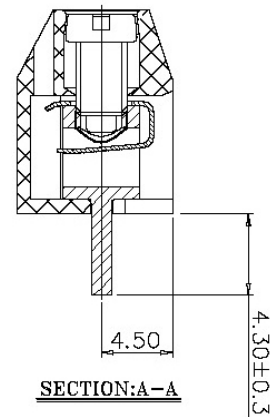
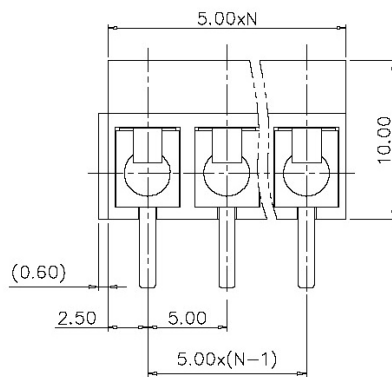
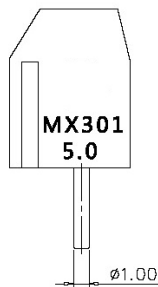
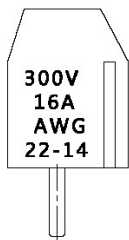
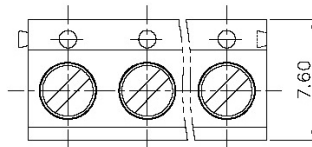
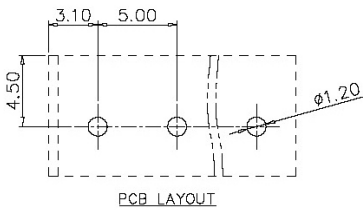
 THIRD ANGLE PROJECTION		<h1>MX301-5.0-XXP-XC</h1>			
		CHKD: /	SIZE	FSCM NO.	DWG NO.
DRFT: /			DO NOT SCALE DRAWING		SHEET



REVISIONS				
ZONE	REV	DESCRIPTION	DATE	APPROVED

NOTES1:

1. Rated Voltage/Current : 250V / 17.5A
2. Torque Value : M2.5 ; 0.29N.m
3. Wire Range : 0.75~1.5mm²

NOTES2:

1. Dimension shall be interpreted per ASME Y14.5-2009
2. Pitch : 5.0mm, Poles : N=02~24P
3. Stripping length : 5~6mm
4. Withstanding Voltage : AC2000V/1Min.
5. Operating temperature: -30°C~+120°C

Total Pitch Tolerances in mm									Nominal dimension range in mm									⊥	=	—	//			
over	over	over	over	over	over	over	over	over	over	over	over	over	over	over	over	over	over	over	over	over	over	over	over	
ø	30	53	70	90	115	150	250	350	ø	30	53	70	90	115	150	200	250	ø	over					
fo	fo	fo	fo	fo	fo	fo	fo	fo	fo	fo	fo	fo	fo	fo	fo	fo	fo	fo	fo	10	all	fo	fo	150
30	53	70	90	115	150	250	350	500	30	53	70	90	115	150	200	250	320	10				100	150	
±0.18	±0.20	±0.25	±0.3	±0.35	±0.44	±0.60	±0.70	±0.85	±0.20	±0.25	±0.30	±0.35	±0.44	±0.55	±0.70	±0.80	±0.90	0.2	0.3	0.3	0.3	0.2	0.3	0.5