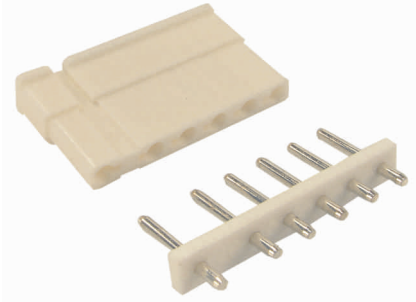


V_5

Chave de código / How to order

V (F) 5-03 → 2 a/to 6 contatos/ways

PC - Macho para PCI - 180° / Male for PCB - 180°
F - Alojamento / Housing



O código do terminal utilizado no alojamento VF5 é o VT5.
The p/n of the terminal used with VF5 housing is VT5.

Especificações / Specifications

Capacidade do contato / Rated current	5A
Tensão de operação máx. / Maximum operating voltage	250 VCA ou VCC / VAC or VDC
Resistência de contato máx. / Max. contact resistance	20 m
Resistência de isolamento / Insulation resistance	1000M min. (500VCC/VDC)
Rigidez dielétrica / Withstanding voltage	1500 VCA / VAC (1 minuto / minute)
Temperatura de operação / Operating temperature range	-25° a/to 85°C
Material do isolador / Insulator material	PA 66 UL94V-0
Material do contato / Contact material	Latão / Brass
Acabamento / Finish	Estanhado / Tin plated
Fios aplicáveis / Applicable wires	# 18-24AWG

Dimensões / Dimensions

VPC5

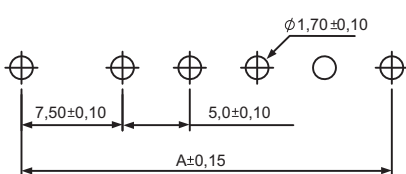
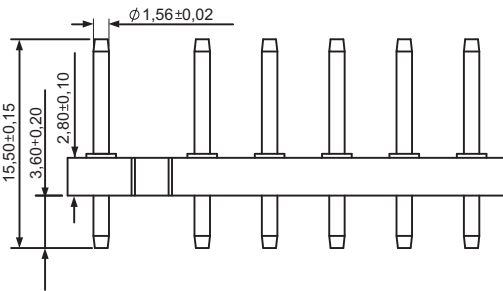
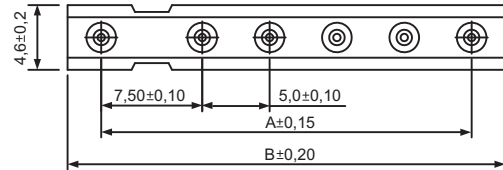
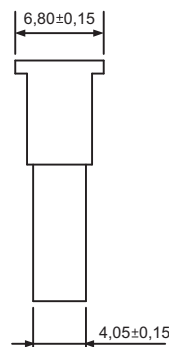
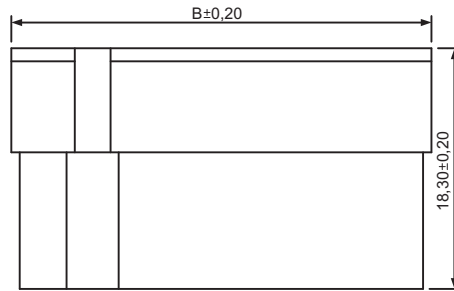
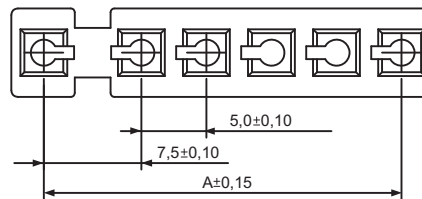


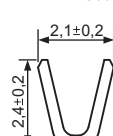
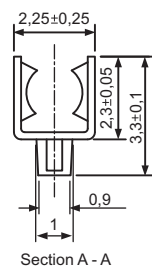
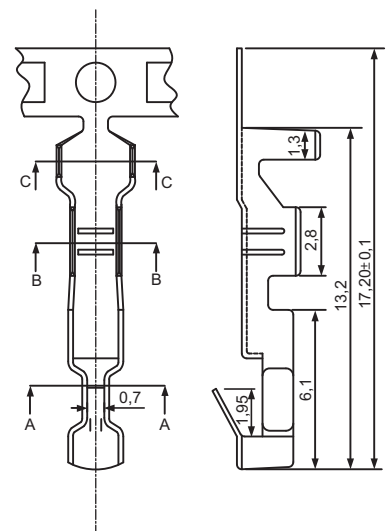
Diagrama PCI / Printed Circuit Layout

Contatos Contacts	A	B
2	7,5	12,5
3	12,5	17,5
4	17,5	22,5
5	22,5	27,5
6	27,5	32,5

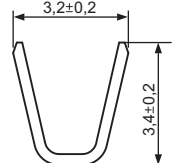
VF5



VT5



Section B - B



Section C - C