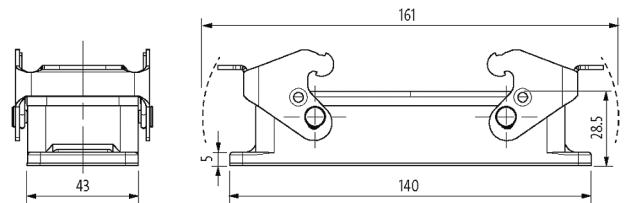


**B24 Bulkhead mounted h., IP65**

Double locking lever m.

B24  
Bulkhead mounted housing  
Double locking lever  
IP65

Technical data will be only guaranteed with Murrelektronik components.

[Link to Product](#)**Illustration**

Product may differ from Image

**General data**

Housing type	Bulkhead mounted housing
Size	B24
Dimensions HxWxD	28.5x43x140 mm
Material (housing)	Aluminum die-cast
Material (housing surface)	powder-coated
Locking material	Steel (galvanized)
Material (gasket)	NBR
Climatic category	40/100/21 (EN 60068-1)
Temperature range	-40...+100 °C

**Technical Data**

Locking of ports	Double locking lever
Protection (housing)	IP65 inserted and tightened (EN 60529)
Mating cycles	min. 500

**Commercial data**

country of origin	CZ
customs tariff number	85389099
EAN	4048879646772
eClass	27143424
Packaging unit	1