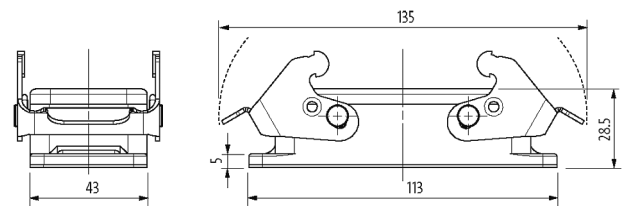
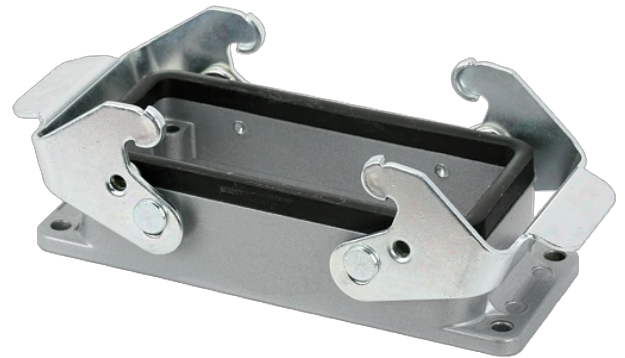


B16 Bulkhead mounted h., IP65

Double locking lever m.

B16
Bulkhead mounted housing
Double locking lever
IP65

Technical data will be only guaranteed with Murrelektronik components.

[Link to Product](#)**Illustration**

Product may differ from Image

General data

Housing type	Bulkhead mounted housing
Size	B16
Dimensions H×W×D	28.5×43×113 mm
Material (housing)	Aluminum die-cast
Material (housing surface)	powder-coated
Locking material	Steel (galvanized)
Material (gasket)	NBR
Climatic category	40/100/21 (EN 60068-1)
Temperature range	-40...+100 °C

Technical Data

Locking of ports	Double locking lever
Protection (housing)	IP65 inserted and tightened (EN 60529)
Mating cycles	min. 500

Commercial data

country of origin	CZ
customs tariff number	85389099
EAN	4048879646468
eClass	27143424
Packaging unit	1