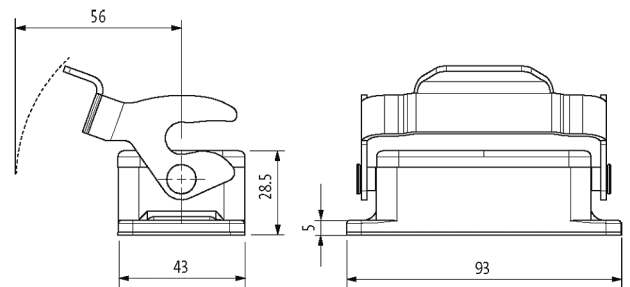


B10 Bulkhead mounted h., IP65

Single locking lever m.

B10
Bulkhead mounted housing
Single locking lever
IP65
Technical data will be only guaranteed with Murrelektronik components.

[Link to Product](#)**Illustration**

Product may differ from Image

General data

Housing type	Bulkhead mounted housing
Size	B10
Dimensions HxWxD	28.5x43x93 mm
Material (housing)	Aluminum die-cast
Material (housing surface)	powder-coated
Locking material	Steel (galvanized)
Material (gasket)	NBR
Climatic category	40/100/21 (EN 60068-1)
Temperature range	-40...+100 °C

Technical Data

Locking of ports	Single locking lever
Protection (housing)	IP65 inserted and tightened (EN 60529)
Mating cycles	min. 500

Commercial data

country of origin	CZ
customs tariff number	85389099

EAN	4048879644952
eClass	27143424
Packaging unit	1