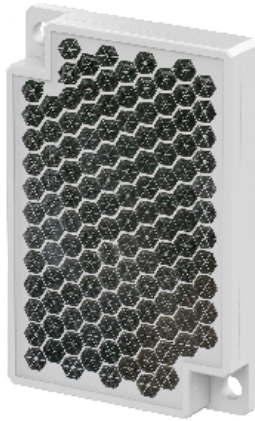


**Cautions during Installation**

- In addition to the offered reflector, other reflectors can be suitable for the usage environment.
- Select the reflector size that suitable for the installation space.
- In general, the bigger the size of the reflector, the longer a sensing distance
- High-reflectance reflector (MS-2S, MS-3S) makes the sensing distance longer than the general reflector.
- Reflectance may vary depending on the operating environment and mounting conditions.

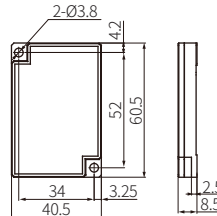
# Reflectors



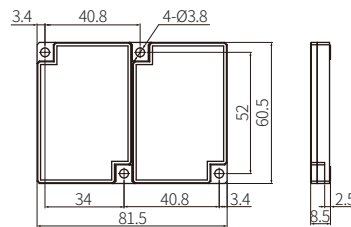
**Dimensions**

• Unit: mm, For the detailed drawings, follow the Autonics website.

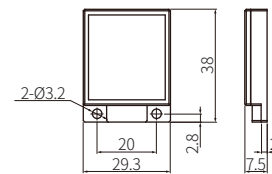
■ MS-2□



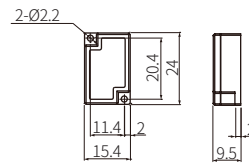
■ MS-3□



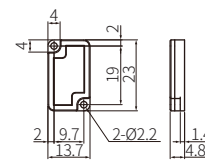
■ MS-4□



■ MS-5□



■ MS-6□



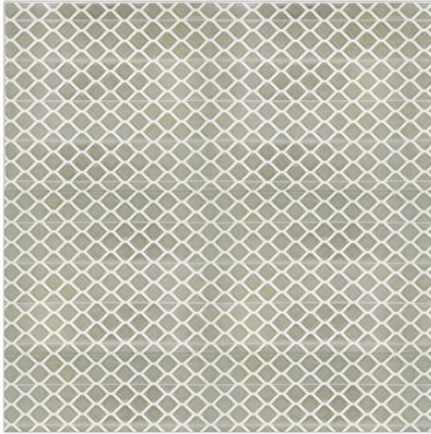
## MS Series CATALOG

**For your safety, read and follow the considerations written in the instruction manual, other manuals and Autonics website.**  
 The specifications, dimensions, etc. are subject to change without notice for product improvement. Some models may be discontinued without notice.

**Features**

- Provide the general reflector for retroreflective and polarized retroreflective type photoelectric sensors
- Various reflectors for usage environment
- The bigger the size of the reflector, the longer a sensing distance
- High-reflectance reflector (MS-2S, MS-3S): Increased sensing distance

# Retroreflective Tape



## MST Series CATALOG

**For your safety, read and follow the considerations written in the instruction manual, other manuals and Autonics website.**

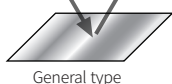
The specifications, dimensions, etc. are subject to change without notice for product improvement. Some models may be discontinued without notice.

### Features

- Easily attached to conditions that are difficult to install a reflector (curved surface, narrow space, detection of moving objects, etc.)
- Available to cut the tape depending on the environment
- High retroreflective performance per unit (Retroreflection: Reflected light reflects as same direction of incident light unlike general reflections.)

#### General reflections

Incident light Reflected light



General type

#### Retroreflection

Incident light Reflected light



MST Series

### Cautions during Use

- DO NOT press the surface of retroreflective tape.
- Clean the tape regularly to maintain optimal performance.  
Be sure to use neutral detergents only. DO NOT use chemical solvents.
- If the reflective surface is damaged, performance may decline.

### Cautions during Installation

- The bigger the size of the retroreflective tape, the longer a sensing distance.  
Check the reflectivity before using the tape.
- Reflectance may vary depending on the operating environment and mounting conditions.
- Clean the adhesive side of the reflective tape with a dry cloth before applying the tape.
- Installation distance:  $\geq 20$  mm

### Ordering Information

This is only for reference.

For selecting the specified model, follow the Autonics website.

MST - ① - ②

#### ① Size

50: 50 × 50 mm  
100: 100 × 100 mm  
200: 200 × 200 mm

#### ② Packaged unit

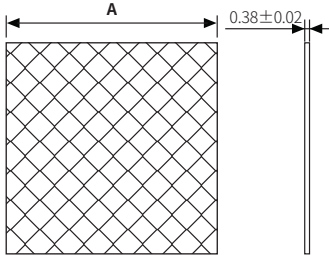
Number: Number of packaged tapes

## Specifications

Model	MST-50-10	MST-100-5	MST-200-2
Applied sensing type	Retroreflective, Polarized retroreflective		
Size	50 × 50 mm	100 × 100 mm	200 × 200 mm
Installation distance	≥ 20 mm		
Packaged unit	10	5	2
Material	Surface film: PMMA, prism layer: PC, adhesive layer: Acrylic		
Ambient temperature	-35 to 65 °C (available temperature of attachment: 10 to 30 °C)		
Approval	EAC		

## Dimensions

- Unit: mm, For the detailed drawings, follow the Autonics website.



Model	A
MST-50-10	□ 50
MST-100-5	□ 100
MST-200-2	□ 200

## Reflectivity by MST Series

The retroreflective tape has higher reflectivity due to bigger size than the reflector. The reflectivity may vary depending on usage environment and installation conditions.

### ■ Retroreflective

Series	MST-50-10	MST-100-5	MST-200-2
BM	70%	110%	170%
BMS	90%	120%	190%
BEN	90%	130%	140%
BX	90%	100%	110%
BTS	95%	100%	100%

### ■ Polarized retroreflective

Series	MST-50-10	MST-100-5	MST-200-2
BJ	40%	60%	100%
BEN	70%	90%	120%
BX	30%	40%	60%
BH	60%	80%	140%
BJR	35%	45%	55%
BJX	35%	45%	55%
BRQ	40%	50%	80%
BRQP (plastic material type)	40%	80%	85%
BRQPS (side sensing type)	25%	30%	35%