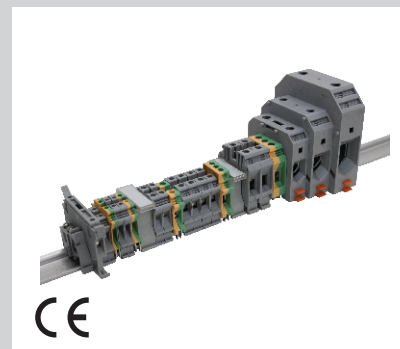


- Conectores de passagem com conexão por parafuso
- Montagem em trilho TS35 ou TS32
- De acordo com a norma IEC 60947

- Screw type terminal block
- TS35 or TS32 rail mounting
- According to IEC 60947



Conectores de passagem simples / Simple terminal blocks

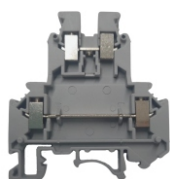


Modelo cinza / Grey model	BS2,5C	BS4C	BS6C	BS10C	BS16C
Modelo Azul / Blue model	BS2,5A	BS4A	BS6A	BS10A	BS16A
Tensão nominal / Nominal voltage	690V	800V	800V	800V	800V
Corrente nominal / Nominal current	24A	32A	41A	76A	101A
Cabo aplicável / Applicable cable	0,2 - 2,5mm ²	0,2 - 4mm ²	0,2 - 6mm ²	0,5 - 10mm ²	0,5 - 16mm ²
Dimensões (LxAxP) mm Dimensions (WxHxD) mm	42,5 x 40,8 x 6,2	42,5 x 45,7 x 6,2	42,5 x 45,7 x 8,2	42,5 x 45,7 x 10,2	43,5 x 51,5 x 12,1
Diagrama / Diagram					



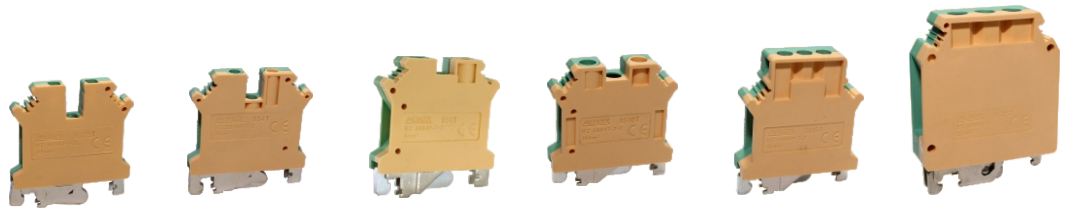
Modelo cinza / Grey model	BS35C1	BS50C	BS95C	BS150C
Modelo Azul / Blue model	BS35A1	-	-	-
Tensão nominal / Nominal voltage	800V	1000V	1000V	1000V
Corrente nominal / Nominal current	125A	150A	232A	309A
Cabo aplicável / Applicable cable	0,2 - 35mm ²	1 - 50mm ²	1 - 95mm ²	1 - 150mm ²
Dimensões (LxAxP) mm Dimensions (WxHxD) mm	51,0 x 61,4 x 15,0	76,0 x 75,6 x 21,0	88,1 x 89,4 x 26,2	105,8 x 110,6 x 32,2
Diagrama / Diagram				

Conectores de passagem duplo / Two levels terminal blocks



Modelo cinza Grey model	Tensão nominal Nominal voltage	Corrente nominal Nominal current	Cabo aplicável Applicable cable	Dimensões (LxAxP) mm Dimensions (WxHxD) mm	Diagrama / Diagram
BSD4C1	500V	32A	0,2 - 4mm ²	61,7 x 57,1 x 6,3	

Conectores terra / Ground terminal blocks



Modelo / Model	BS2,5T	BS4T	BS6T	BS10T	BS16T	BS35T1
Cabo aplicável / Applicable cable	0,2 - 2,5mm ²	0,2 - 4mm ²	0,2 - 6mm ²	0,5 - 10mm ²	0,5 - 16mm ²	0,2 - 35mm ²
Dimensões (LxAxP) mm Dimensions (WxHxD) mm	42,9 x 40,6 x 6,2	42,5 x 45,8 x 6,2	42,9 x 45,8 x 8,2	42,8 x 45,9 x 10,2	51,0 x 47,5 x 12,2	50,5 x 61,0 x 16,1

Porta fusível / Fuse holder



Modelo cinza Gray model	Tensão nominal Nominal voltage	Corrente nominal Nominal current	Cabo aplicável Applicable cable	Fusível aplicável Applicable fuse	Dimensões (LxAxP) mm Dimensions (WxHxD) mm
BS4-FHC	800V	6,3A	0,2 - 4mm ²	5x20, 5x25 e / and 5x30mm	72,5 x 56,5 x 8,2

Acessórios / Accessories

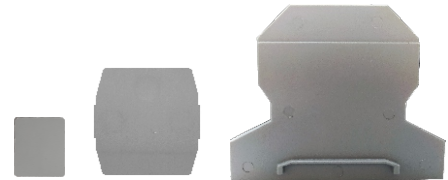
Capa para bloco / Block cover



Modelo cinza Gray model	Conector aplicável Applicable block
BS-P2,5C	BS2,5
BS-P4-10C	BS4 - BS10
BS-P16C	BS16
BSD-ATC1	BSD4C1
BSD-AIC1	BSD4C1*

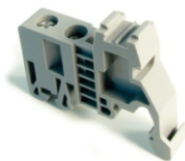
*Capa adaptadora / Adapter cover

Separador / Separator



Modelo Model	Descrição Description	Conector aplicável Applicable block
BS-AP2,5C	Mini-separador Mini separator	BS2,5
BS-AP4-35C	Mini-separador Mini separator	BS4 - BS35
BS-AGC	Separador grande Large separator	BS2,5 - BS16

Poste final / Stop end



Modelo / Model
BM-AP

Porta identificador / Label holder



Modelo / Model
BS-ID

Accessórios / Accessories

Identificador / Identifier



Modelo Model	Marcação / Marking										
	Branco Blanc	1 ~ 10	11 ~ 20	21 ~ 30	31 ~ 40	41 ~ 50	51 ~ 60	61 ~ 70	71 ~ 80	81 ~ 90	91 ~ 100
BS2,5	BS-AI2,5	BS-AI2,5-1/10	BS-AI2,5-11/20	BS-AI2,5-21/30	BS-AI2,5-31/40	BS-AI2,5-41/50	BS-AI2,5-51/60	BS-AI2,5-61/70	BS-AI2,5-71/80	BS-AI2,5-81/90	BS-AI2,5-91/100
BS4	BS-AI4	BS-AI4-1/10	BS-AI4-11/20	BS-AI4-21/30	BS-AI4-31/40	BS-AI4-41/50	BS-AI4-51/60	BS-AI4-61/70	BS-AI4-71/80	BS-AI4-81/90	BS-AI4-91/100
BS6	BS-AI6	BS-AI6-1/10	BS-AI6-11/20	BS-AI6-21/30	BS-AI6-31/40	BS-AI6-41/50	BS-AI6-51/60	BS-AI6-61/70	BS-AI6-71/80	BS-AI6-81/90	BS-AI6-91/100
BS10	BS-AI10	BS-AI10-1/10	BS-AI10-11/20	BS-AI10-21/30	BS-AI10-31/40	BS-AI10-41/50	BS-AI10-51/60	BS-AI10-61/70	BS-AI10-71/80	BS-AI10-81/90	BS-AI10-91/100
BS16 ~ BS150	BS-AI16	BS-AI16-1/10	BS-AI16-11/20	BS-AI16-21/30	BS-AI16-31/40	BS-AI16-41/50	BS-AI16-51/60	BS-AI16-61/70	BS-AI16-71/80	BS-AI16-81/90	BS-AI16-91/100

Ponte conectora / Short bridge



Modelo Model	Conector aplicável Applicable block	Número de jumper Jumper quantity
BS-AJ2/4-10	BS2,5 - BS4	10
BS-AJ6-10	BS6	10
BS-AJ10-10	BS10	10
BS-AJ16-10	BS16	10
BS-AJ35-10	BS35	10